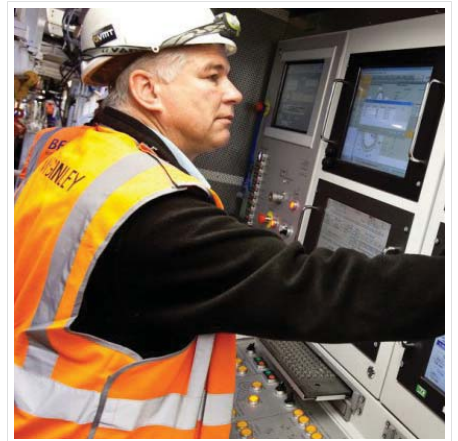
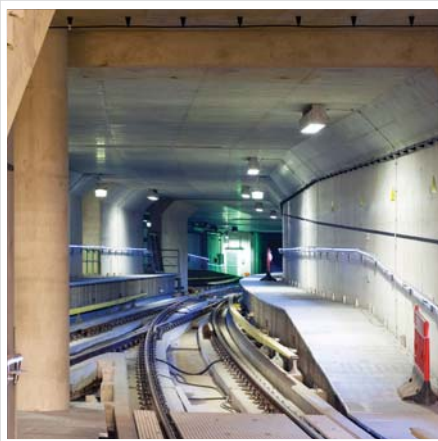


working together

Experts **IN** support services for infrastructure markets



tunnel services

Since 1978 McGinley Support Services have been providing specialist recruitment services to the infrastructure sector. Underpinned by ISO 18001, our dedicated tunnel division has the unique blend of solid management and recruitment processes coupled with extensive industry experience, we can ensure a successful delivery of staff and workers regardless of location and work activity.

The key factors in our approach are:

Commercial transparency

Compliance

Health & safety initiatives

Knowledge of client requirements

Knowledge of project conditions

Planning & preparation (client & personnel)

Reporting methods (KPI/target)

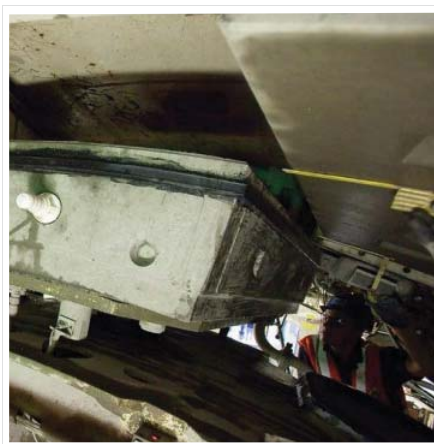
Review process (health & safety, performance)

Site representation & management

tunnel capability and experience

Our staff and workers have up to 30 years' experience on a range of tunnel projects including Heathrow Express, the Piccadilly Line Extension, Hong Kong Deep Sewage, Channel Tunnel, Heathrow Terminal 5, Dublin Port, Thames Water and Crossrail. Types of tunnelling work undertaken include Shield Work, Open and Closed Face and EPB, along with Handwork and NATM mining.

All of our tunnelling staff, regardless of level, are fully compliant with the Tunnel Safety Passport and are working towards NVQ Level 2 as a minimum.



case studies

Heathrow baggage tunnel T3-5 client - Ferrovial

The Heathrow Baggage System was a major infrastructure project at Heathrow Airport. The work comprised the construction of a 2.1km tunnel to facilitate an automated transfer baggage system between Terminal 5C and Terminals 1 and 3, with a link to the future Terminal 2A.

McGinley supplied 4 x complete Tunnel Teams, a General Foreman, Supervisors, Welding Personnel and Surface Labour to Ferrovial Agroman for the construction of the new tunnel baggage system along with the refurbishment of the existing system at Terminals 1 and 4. The TBM utilised was a Dosco Open Faced Shield, 5.5m diameter.

As the first agency supplier to achieve BAA signatory status for Heathrow Airside security passes, McGinley had the capability to reference check and secure Airside passes as required by the project. The project was delivered to schedule with no major accidents/incidents and no lost time accidents.



Crossrail C300/C410 client - BAM/Ferrovial/Kier

C300/C410 – This Crossrail route links the existing Network Rail services, from Maidenhead and Heathrow in the west and Shenfield and Abbey Wood to the east, with new underground stations at Paddington, Bond Street, Tottenham Court Road, Farringdon, Liverpool Street, Whitechapel, Canary Wharf and Woolwich.

The work comprised the construction of 2 x 6.2m internal diameter bored tunnels, each 6.5km long, between the Royal Oak portal and the sprayed concrete lining (SCL) station tunnels at Bond Street (BOS), and Tottenham Court Road (TCR) and the Fisher Street (FS) crossover tunnel.

McGinley supplied 8 x complete Tunnel Teams, Section Foremen, Tunnel Superintendent, Electrical Superintendent, Mechanical Superintendent, Welders, TBM Fitters, Electricians and Surface Labour. The TBM work was completed in January 2014, three months ahead of schedule. The TBM utilised was a Herrenknecht EPB, 6.2m diameter.



mining services include:

- Drill & blast
- EPBM
- Hard rock
- Micro-tunnelling
- NATM/SCL
- Open shield
- Pipe-jacking
- Shaft sinking
- Slurry shield
- TBM tunnelling



professional and technical staff including:

- Construction managers
- Project managers
- Senior tunnel engineers
- Surveyors
- Tunnel engineers
- Tunnel inspectors

types of personnel supplied:

- Back-up miner
- Banksmen (pit-top, pit-bottom)
- Beam hoist operator
- Belt supervisor
- Crane operator (tower, gantry, crawler)
- Electrical foreman
- Electrician (TBM, HV, PLC)
- Erector arm operator
- Fitter (TBM, LOCO, PPM, workshop)
- General foreman
- Groutman
- Handwork miners
- Lead miner
- Loco driver
- Machine operator
- Mechanical foreman
- Miner
- Nozzleman
- Pit boss
- Pump operator
- TBM operator
- Tunnel foreman
- Tunnel superintendent
- Yard foreman



Thank you to Crossrail for providing us with these images.